

## DESCRIPTION

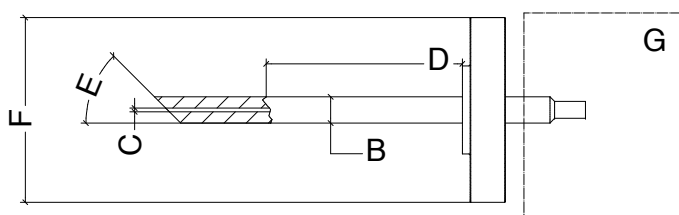
These probes are designed to take high pressure gas in process.

Its small internal diameter implies that a low volume remains in the probe, in this way we can avoid long times in the transport of the sample to obtain analytical measurements in less time.

This type of probes are very resistant to temperature, stresses, pressure, vibration and erosion.

## HOW DEFINE THE PROBE?

For each probe, the data in the example, in **RED**, should be defined by client



SPECIFICATIONS

A	Material:	<b>SS316</b>
B	Probe size:	<b>1/2" NPS</b>
C	Diameter internal bore:	<b>3 mm</b>
D	Probe length:	<b>300 mm</b>
E	Probe End Cut:	<b>45° Angle</b>
F	Process connection:	<b>Flange ANSI B16.5 1"1500#RTJ</b>
G	Other components:	<b>To be defined</b>
H	Other specifications:	<b>To be defined</b>

**NOTE:** If you unknow the data to define the probe, please contact [analyzer@manvia.com](mailto:analyzer@manvia.com).