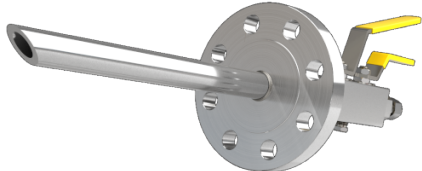


DESCRIPTION

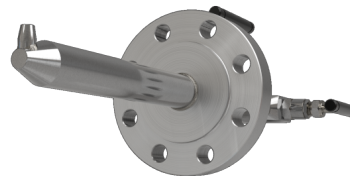
An appropriate analysis system starts with a correct sampling probe in process. If we do not take a representative sample process, we will never be able to have a reliable analysis system. This basic comment is sometimes undervalued in projects. We can spend large amounts of money buying analyzers or conditioning systems, but if we don't have the right process sampling probe, probably we won't get the expected results. Consult Manvia for the most suitable probes for each application:

TYPES

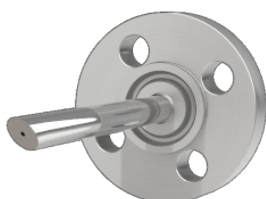
STANDARD



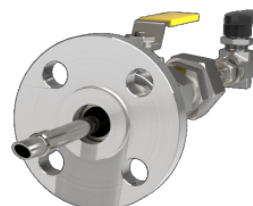
ISOKINETIC



GAS



RETRACTABLE



Other types under request